

How To Order (型号表示方法)



HSRF 2538	-	1000L	-	A+B	-	3SETS
Type 型号		Length 使用长度		Brackets 锁头		Quality 订货量

Dimensions(mm)(外形尺寸图(毫米))

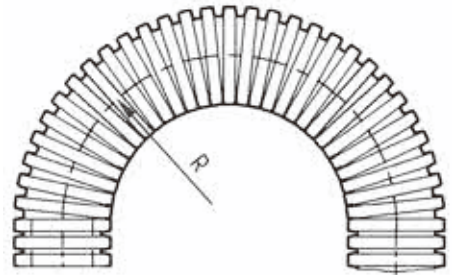
stat.R

Lowest Recommended Bending Radius For Static(Fixed) Instalation.

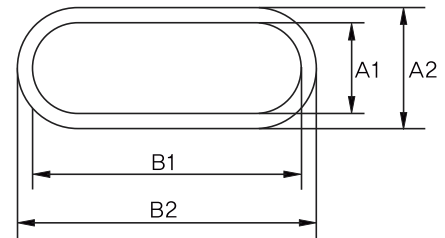
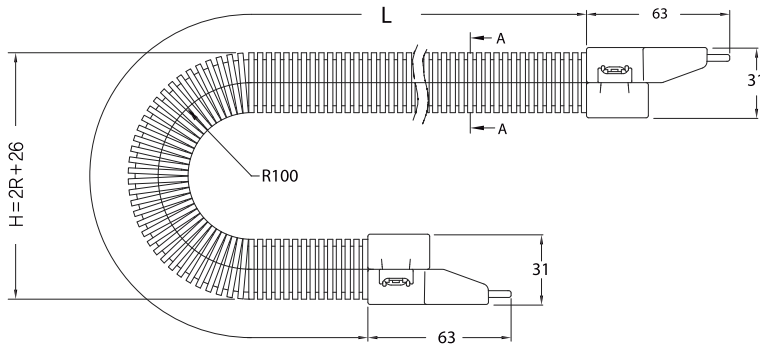
dyn.R

Lowest Recommended Bending Radius For Dynamic(Flexible) Instalation.

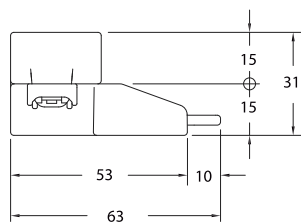
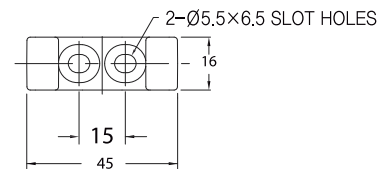
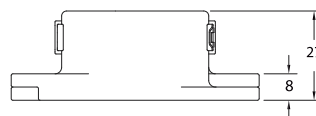
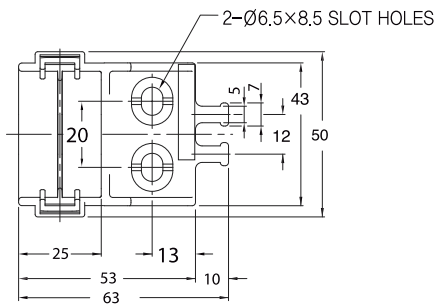
stat.R	dyn.R	A1	A2	B1	B2
40	100	18	26	30	38



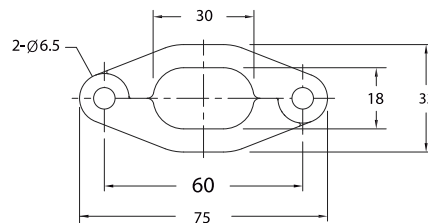
Chain



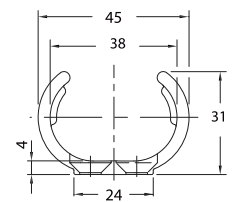
Brackets



A TYPE



B TYPE



MODEL TYPE

拖链 Chain

RoboFlex Series HSRF 2849

How To Order (型号表示方法)



HSRF 2849 - 1000L - A+B - 3SETS

Type
型号

Length
使用长度

Brackets
锁头

Quality
订货量

Dimensions(mm)(外形尺寸图(毫米))

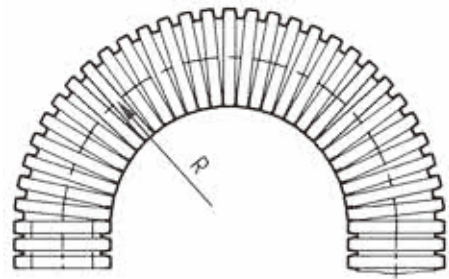
stat.R

Lowest Recommended Bending Radius For Static(fixed) Installation.

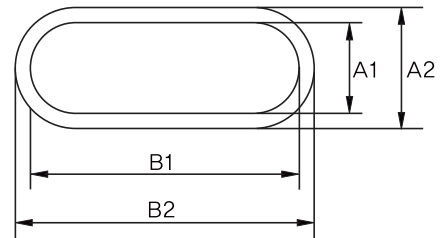
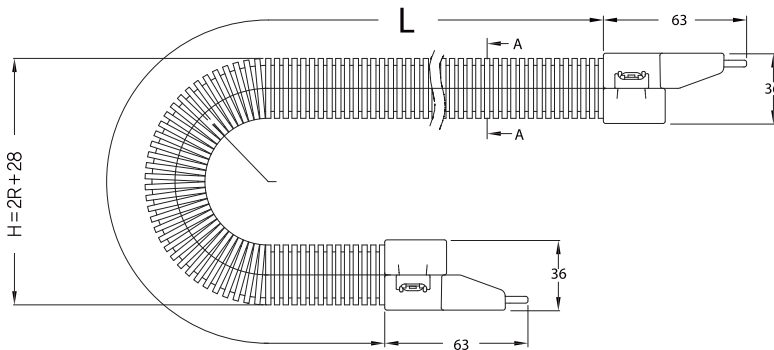
dyn.R

Lowest Recommended Bending Radius For Dynamic(Flexible) Installation.

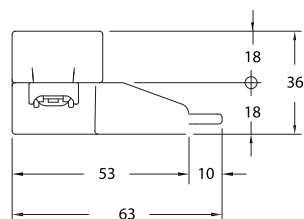
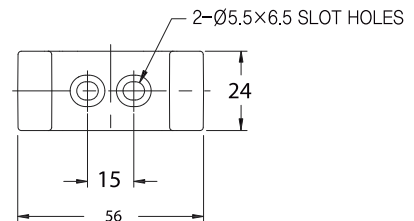
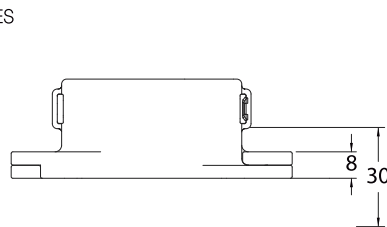
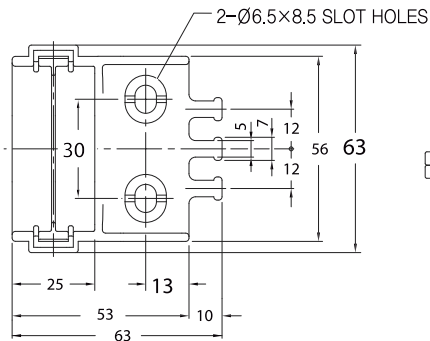
stat.R	dyn.R	A1	A2	B1	B2
50	120	21	28	41	48



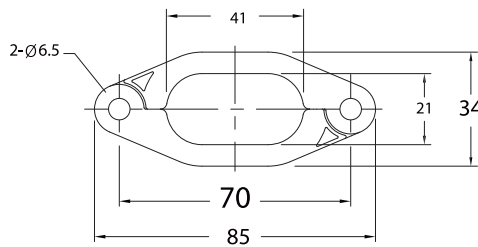
Chain



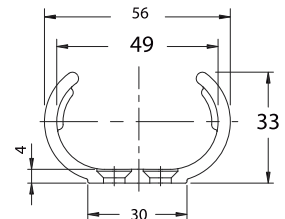
Brackets



ATYPE Fixed Bracket
固定端支架



B TYPE



Moxing Bracket
移动端支架

How To Order (型号表示方法)



HSRF 3560 - 1200L - A+B - 3SETS

Type
型号

Length
使用长度

Brackets
锁头

Quality
订货量

Dimensions(mm)(外形尺寸图(毫米))

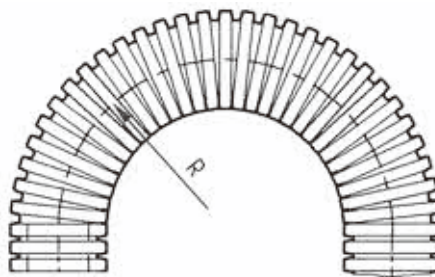
stat.R

Lowest Recommended Bending Radius For Static(Fixed) Installation.

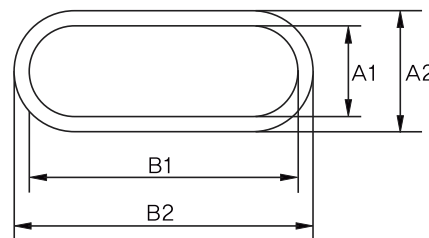
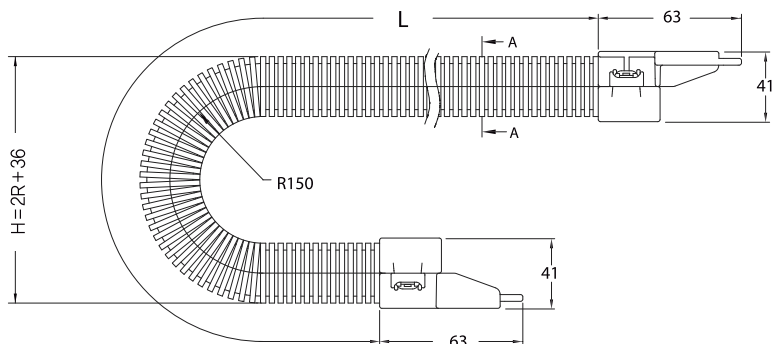
dyn.R

Lowest Recommended Bending Radius For Dynamic(Flexible) Installation.

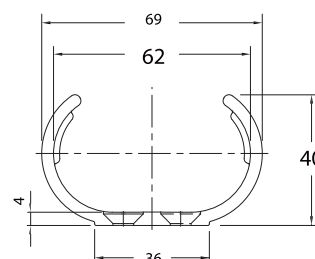
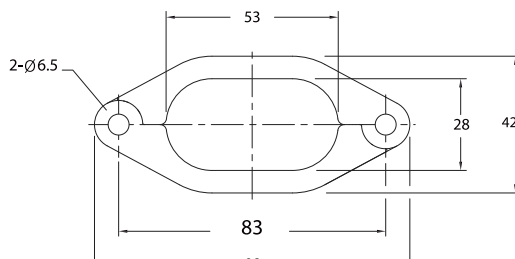
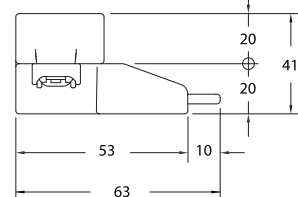
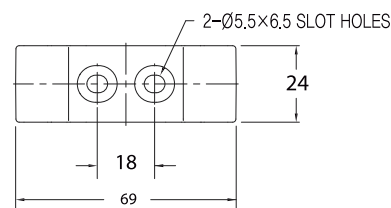
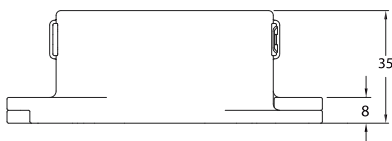
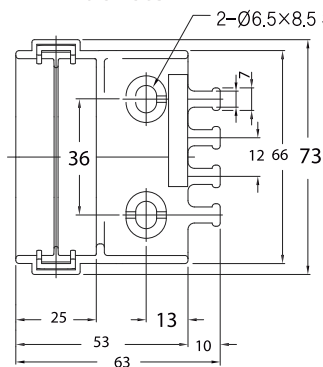
stat.R	dyn.R	A1	A2	B1	B2
60	150	28	36	53	61



Chain



Brackets



A TYPE

B TYPE

MODEL TYPE

拖链 Chain

RoboFlex Series HSRF 4565

How To Order (型号表示方法)



HSRF 4565	-	1500L	-	A+B	-	3SETS
Type 型号		Length 使用长度		Brackets 锁头		Quality 订货量

Dimensions(mm)(外形尺寸图(毫米))

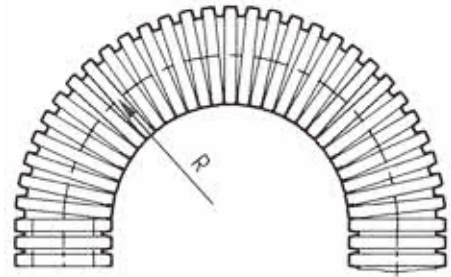
stat.R

Lowest Recommended Bending Radius For Static(fixed) Installation.

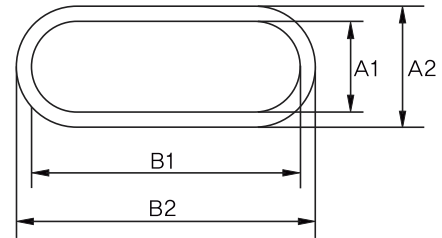
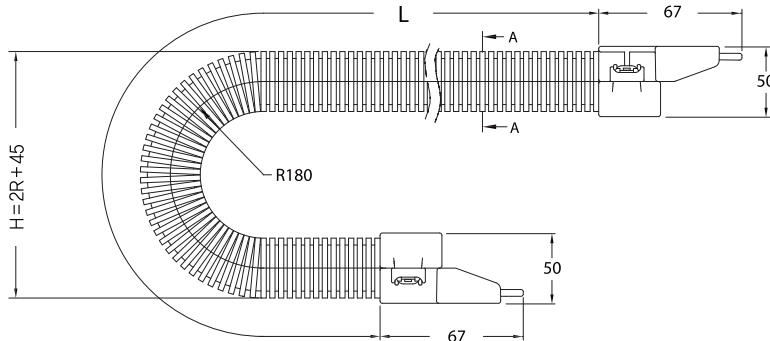
dyn.R

Lowest Recommended Bending Radius For Dynamic(Flexible) Installation.

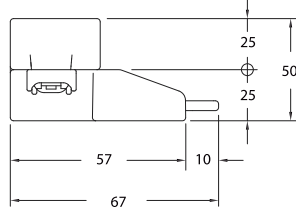
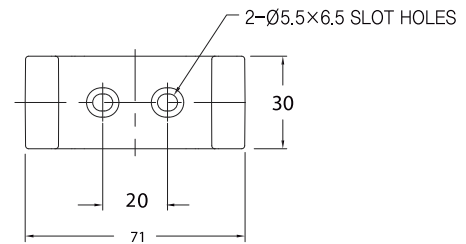
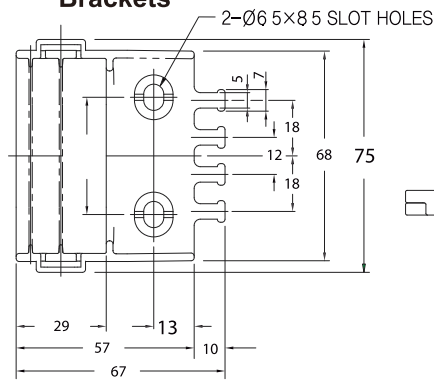
stat.R	dyn.R	A1	A2	B1	B2
70	180	37	45	55	63



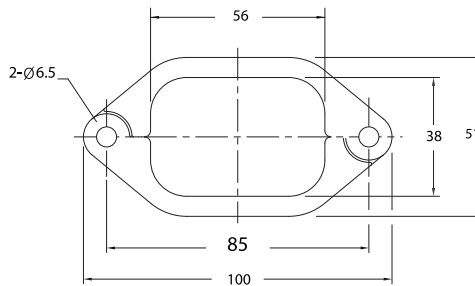
Chain



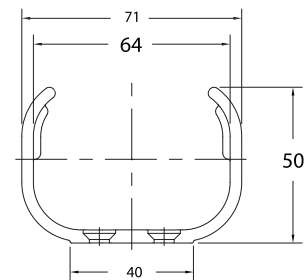
Brackets



A TYPE



B TYPE



MODEL TYPE